

# brooks andell

World Class Precision Engineering



High Quality Cement Mill Chain

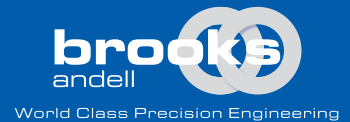
Established in the UK in 1973, the Brooks group of companies has an international reputation as a leading manufacturer and supplier of high quality engineered products.

Our approach has always been customer driven with the emphasis being put on, not only a quality product, but also a customer-focused service, both with pre-design advice and after sales technical support.

To complement their growing international presence, in 2005 Brooks Andell Ltd. branched out and set up a manufacturing and technical centre in Asia. Our facilities both in Kuala Lumpur, Malaysia and Ningbo, China are managed by UK engineers who have spent many years producing high specification conveyor chains and sprockets for a wide range of industries.

Our location enables us to provide immediate technical and product support, while giving us the flexibility in manufacturing products that satisfy the needs of our customers.

Supported by their exclusively appointed agents throughout Malaysia, Indonesia and Thailand, Brooks Andell provides short delivery times with chain and sprockets being stocked in strategic locations.



Our many years of experience enable us to **DESIGN** and manufacture a quality and reliable product.



Our product line **INSPECTION** routines monitor quality through every stage of production, giving a **CONSISTENTLY HIGH SPECIFICATION** product.

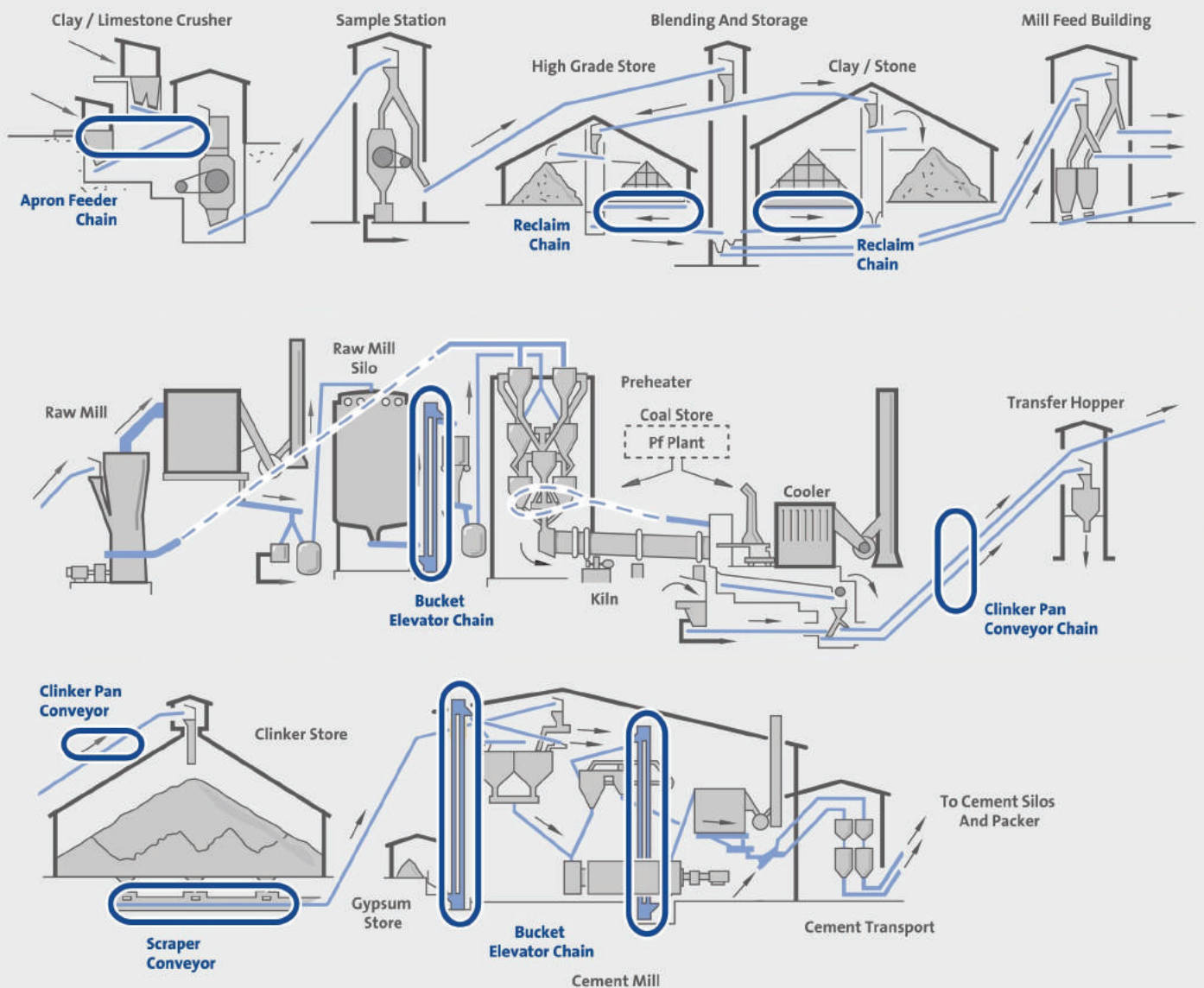


Our advice and **SUPPORT** gives you peace of mind, knowing that we are backing you up on your journey to success.



Our policy is to give the **BEST AFTER SALES SERVICE** by providing full on site **TRAINING** for all engineering staff, helping you to **MAXIMISE PRODUCT LIFE**.

# CEMENT



# BROOKS ANDELL - CONVEYOR CHAINS

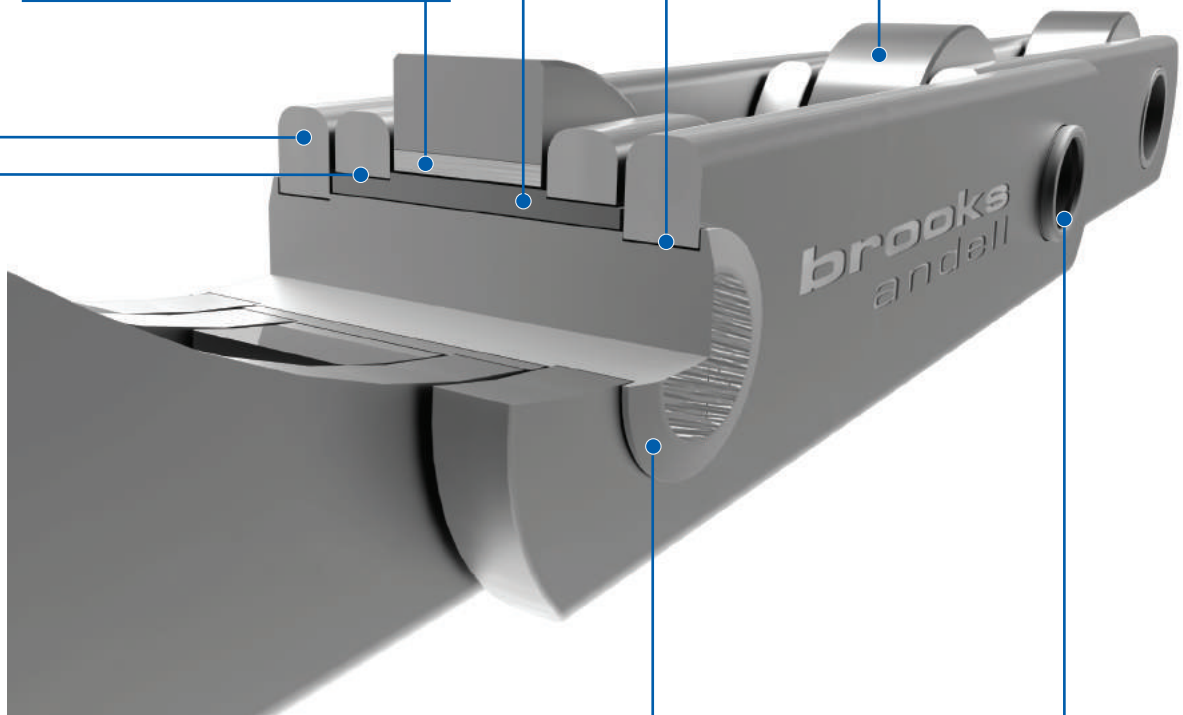
Link plates produced from high carbon cold drawn steel  
The use of cold drawn steel avoids the internal stresses associated with guillotined steel strips.  
The longitudinal grain flow presented in cold drawn steel helps prevent fatigue and withstand shock loads.

Case hardened alloy steel bushes precision machined from seamless tube  
Ensuring minimum distortion and superior concentricity.

Bearing Pins with location shoulders and interference fit  
Precise positioning of outer plates adds to strength whilst ensuring accuracy of attachment positioning.  
Location shoulders help maintain flexibility of chain.

Optional Stainless Steel or Nitride treated liner bushes  
Provides extended life in severe conditions.

Ground Hardened Rollers  
Grinding the outer diameter gives excellent wear resistance and good load carrying qualities, helping to reduce wear on sprocket tooth.



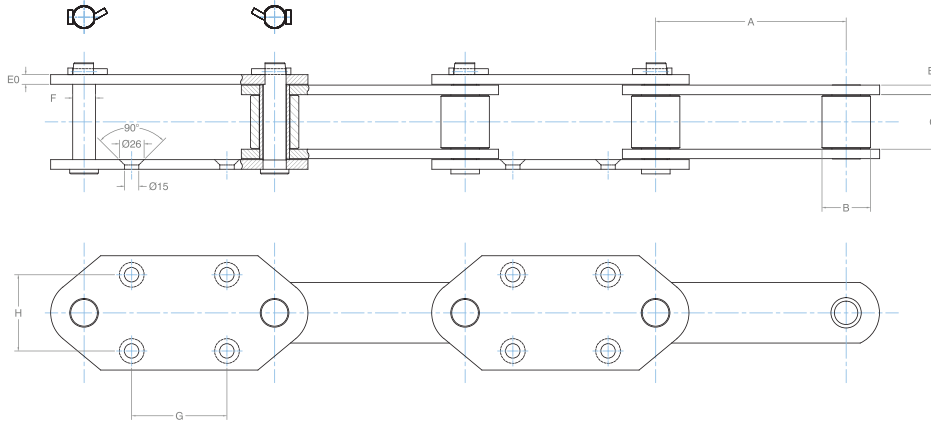
Bushes with location shoulders and interference fit  
For precise assembly, control on inner width and prevention of bush rotation. Bush shoulder length extended to form clearance between inner and outer plates to provide uniform lubrication, increased strength and life. This reduces the possibility of chain seizure.

Spin Riveted Induction Hardened Alloy Steel Pins  
For optimum life and the strongest rivet in any standard chain.  
Holes precision punched on dedicated progression tooling  
Guarantees consistently high tolerance pitch control.

Alloy Steel Seamless Tube used for all Hollow Pins  
For wear and shock resistance.  
True spin riveting for a stronger rivet.

# BUCKET ELEVATOR CHAINS

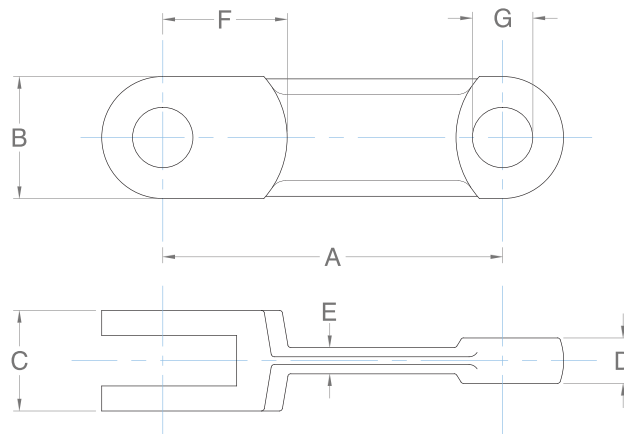
## DOUBLE STRAND BUCKET ELEVATOR CHAINS



### Bucket Elevator Chains

	Breaking Load (kN)	Dimensions					
		A (mm)	B (mm)	C (mm)	EO/E1 (mm)	F (mm)	G x H (mm)
BAE 50240	240	152.4	38.00	38.50	8.00	16.00	75 x 70
BAE 100380	380	100	44.50	51.80	10.00	22.00	100 x 80
BAE 200550	550	200	48.50	57.80	10.00	26.00	100 x 80
BAE 250750	750	250	63.50	67.40	12.00	32.00	140 x 100
BAE 2501000	1000	250	70.00	75.00	16.00	36.00	140 x 100
BAE 3001200	1200	300	70.00	75.00	18.00	40.00	170 x 120
BAE 3001200XL	1200	300	75.00	82.50	18.00	40.00	170 x 120

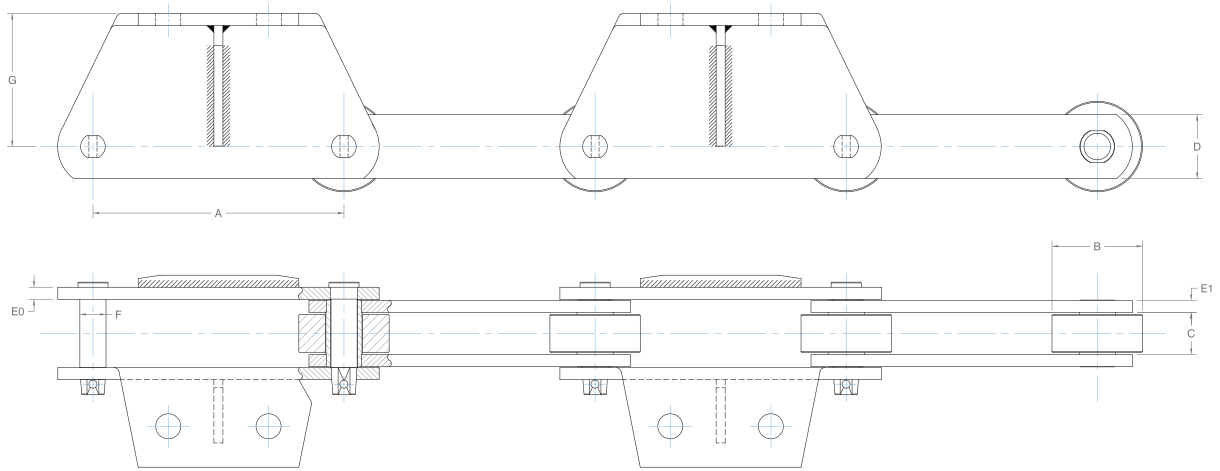
## DROP FORGED CHAIN



### Drop Forged Chain

	Breaking Load (kN)	Dimensions						
		A (mm)	B (mm)	C (mm)	D (mm)	E (mm)	F (mm)	G (mm)
BAF 102	150	102	36	28	12	7.6	32	14
BAF 142	300	142	50	42	20	11	46	25
BAF 142H	450	142	50	62	30	16.5	55	25
BAF 142T	600	142	50	62	30	16.5	55	25
BAF 200	500	200	60	62	28	20	58	25
BAF 216	582	216	72	58	25	18	60	35
BAF 260	700	260	75	70	31	20	79	32

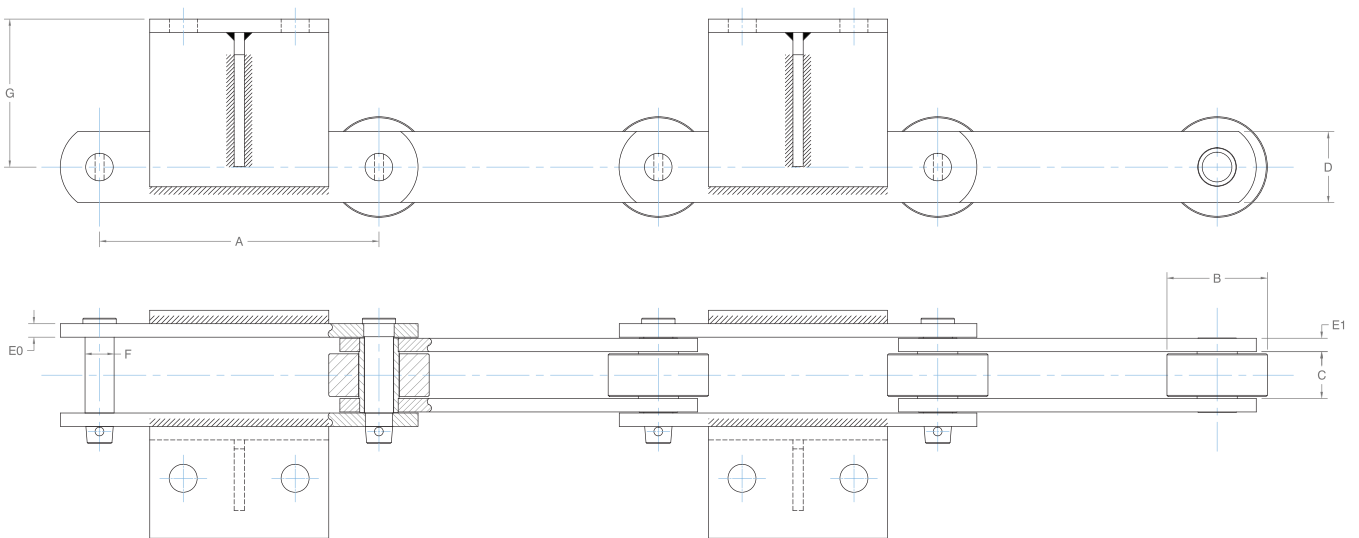
# CLAY RECLAIMER CHAINS



## H Series

### Dimensions

	Breaking Load (kN)	A (mm)	B (mm)	C (mm)	D (mm)	EO/E1 (mm)	F (mm)	G (mm)
BAH 2501000	1000	250	130	58	100	15	42	135
BAH 3151100	1100	315	130	60	100	15	36	-
BAH 4001100	1100	400	130	70	100	15	36	-

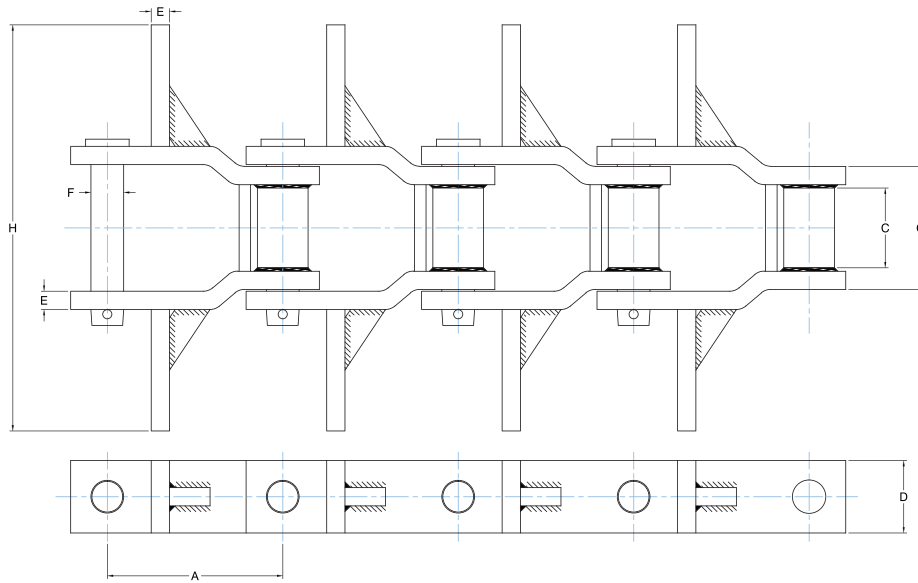


## S Series

### Dimensions

	Breaking Load (kN)	A (mm)	B (mm)	C (mm)	D (mm)	EO/E1 (mm)	F (mm)	G (mm)
BAS 250475	475	250	100	49.213	69.85	9.525	25.4	109.935
BAS 250490	490	250	120	62	80	12	33	65
BAS 250630	630	250	140	65	100	14	36	140
BAS 250770	770	250	-	76.2	76.2	12.7	28.575	103.188
BAS 315636	636	315	-	36.51	69.85	12.7	25.4	113.506
BAS 315658	658	315	-	36.513	69.85	12.7	25.4	127
BAS 315757	757	315	120.65	49.213	82.55	12.7	36.513	158.75

# CRANKED LINK HEAVY DUTY DRAG CHAIN

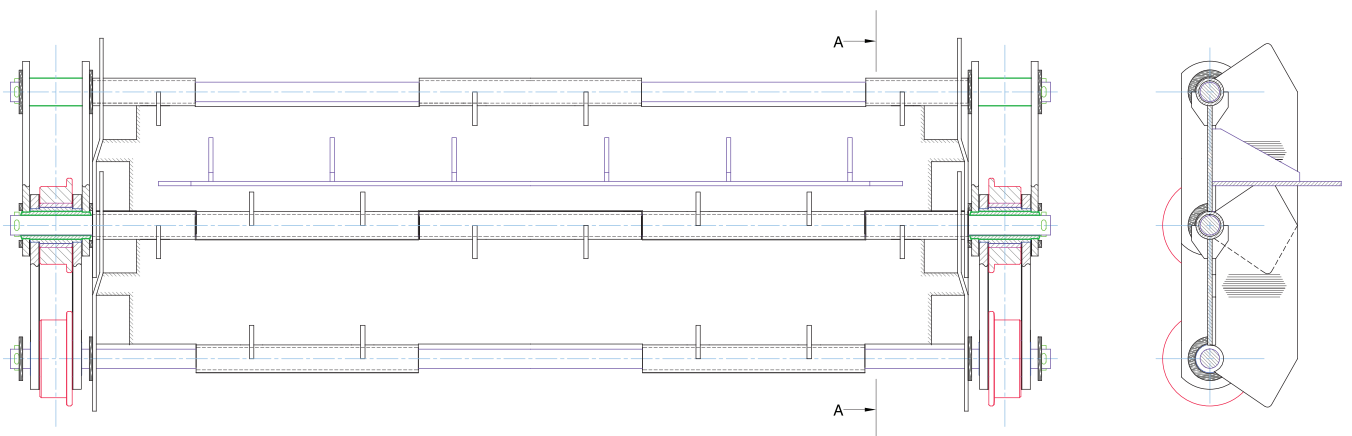


## Cranked Link Heavy Duty Drag Chain

### Dimensions

	Breaking Load (kN)	A (inches)	C (inches)	D (inches)	E (inches)	F (inches)	G (inches)	H (inches)
BAC 5157	778	6.05	2.75	2.5	0.63	1.13	4.63	8-14
BAC 6067	1000	9	3.63	2.5	0.75	1.25	5.5	10-26
BAC 5121	1223	9	3.63	2.5	1.13	1.25	6.31	10-30
BAC 6121	1223	9	3.63	2.5	1.13	1.25	6.31	10-30

# APRON CONVEYOR CHAIN



VIEW A-A

Brooks Andell offers a wide range of Apron Conveyor chains and slats to suit your needs. Including inboard and outboard roller designs and specialised heat treatment for the link plates and round parts for increased breaking load and wear resistance.

Apron Conveyors are ideal for transporting a wide range of loose bulk materials, from hot and abrasive to fine and dry materials. Apron conveyor systems are effective at not only horizontal conveying but also incline conveying and acting as a feeding conveyors for elevator systems. These conveyors are known for their durability and low maintenance, being designed to be able to absorb the impact of bulk materials.

# BROOKS WORLDWIDE

[www.brooks.ltd.uk](http://www.brooks.ltd.uk)



## ENGLAND

BROOKS LTD

Causeway Park, Manchester Road  
Audenshaw, Manchester M34 5UU  
England.

Tel : +44 (0) 161 666 5000

Fax : +44 (0) 161 666 5050

Email : [sales@brooks.ltd.uk](mailto:sales@brooks.ltd.uk)



## MALAYSIA

BROOKS ANDELL SDN. BHD.

No 30-32, Jalan PJU 3/49,  
Sunway Damansara,  
47810 Petaling Jaya, Selangor D.E.  
Malaysia.

Tel : +6 03 7804 0407

Fax : +6 03 7804 4407

Email : [sales@brooksandell.com.my](mailto:sales@brooksandell.com.my)



## USA

BROOKS USA Inc.

2993, South Oak Way, Lakewood  
Co 80227, USA

Tel : +1 303 484 1986

Fax : +1 303 484 1989

Email : [brooksusa@comcast.net](mailto:brooksusa@comcast.net)

Approved Distributor:

**brooks**  
andell  
World Class Precision Engineering